

The power of Artificial Intelligence

Computer Assisted Retinal Analysis

DIAGNOS inc.

CARA Overview Presentation

André Larente, President

May 2017



Disclaimer

This document contains certain forward-looking statements with respect to the Corporation. These forward-looking statements, by their nature, necessarily involve risks and uncertainties that could cause actual results to differ materially from those contemplated by these forward-looking statements. We consider the assumptions on which these forward-looking statements are based to be reasonable, but caution the reader that these assumptions regarding future events, many of which are beyond our control, may ultimately prove to be incorrect since they are subject to risks and uncertainties that affect us. These risks and uncertainties include risks associated with market acceptance, competitive developments and other factors. Except for ongoing obligations under securities laws to disclose all material information to investors, we disclaim any intention or obligation to update or revise any forward-looking statements, whether as a result of new information, future events or otherwise.

WHERE AI
GETS REAL.



Diagnos Highlights

DIAGNOS

Listed on TSX- Venture symbol ADK (2001)

Mission: to develop applications using Artificial Intelligence

In production: CARA (Computer Assisted Retina Analysis)

In development: CARDIO, OCT

Revenues: 2015 \$500K, 2016 \$2.2M, estimate 2018 \$6.6-12M

Profitability: planned for FY 2018

Installations: 14 countries

AI contribution: Automatic analysis of retina images and tele medicine application. Objective to reduce cost of governments and primary care facilities. Detection of eye disease at the GP level.

1

Introduction

Artificial Intelligence market

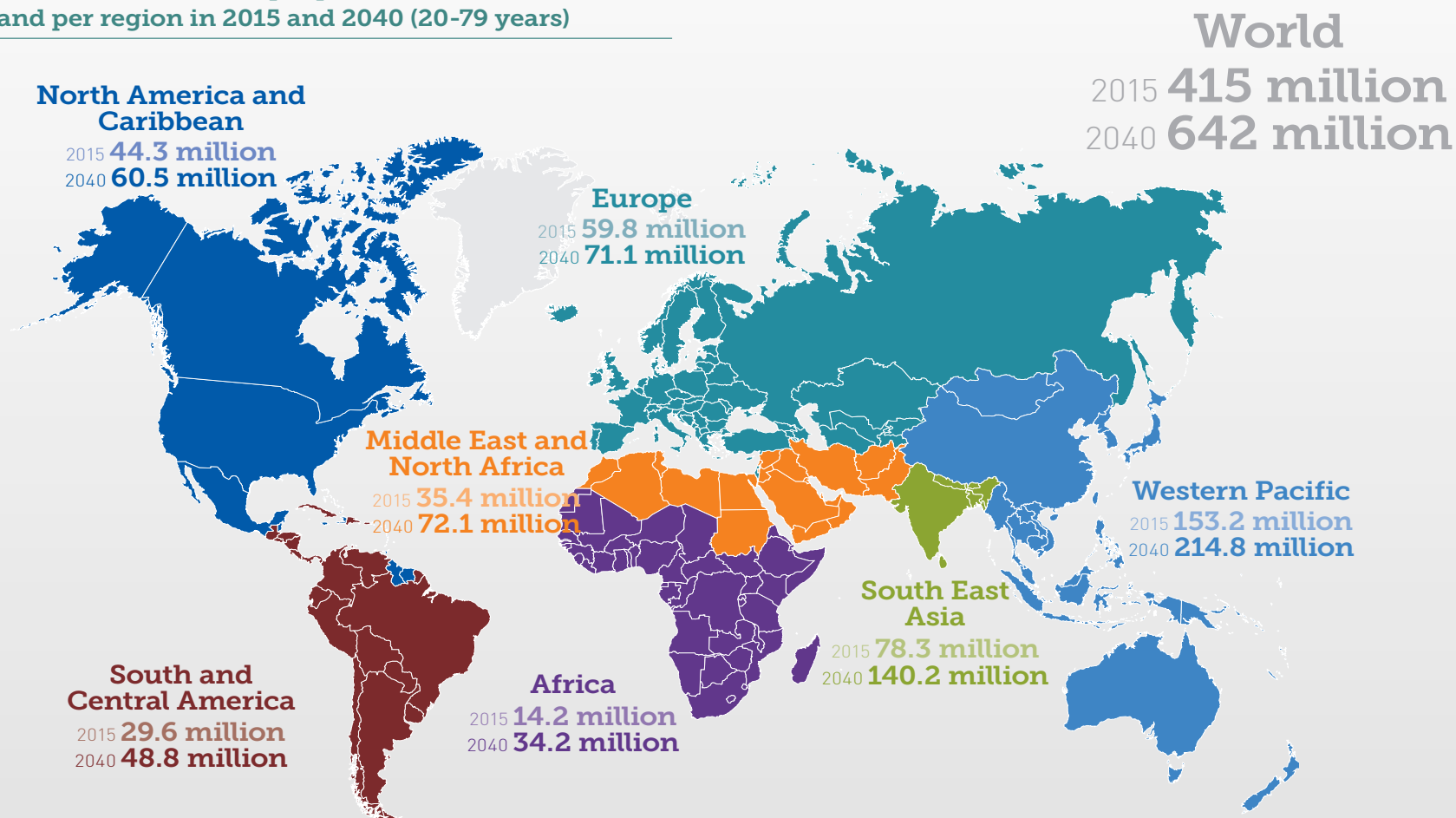


- AI in healthcare aims to improve patient outcomes by assisting healthcare practitioners in using medical knowledge
- The AI market for healthcare applications is expected to achieve rapid adoption globally, with a compound annual growth rate (CAGR) of 42 percent until 2021.
- **By 2020, chronic conditions such as cancer and diabetes are expected to be diagnosed in minutes using cognitive systems**
- **By 2025, AI systems are expected to be implemented in 90 percent of the US and 60 percent of the global hospitals and insurance companies**

Source JP Morgan

Diabetes: A global emergency

Estimated number of people with diabetes worldwide and per region in 2015 and 2040 (20-79 years)



Source IDF Diabetes Atlas 2015

Diagnos Inc.

Our mission is early detection of critical health issues through the use of AI.

- 500 million diabetics today and growing
- Screening services aimed at preventing vision loss and other consequences of chronic disease
- Supporting an active research and development program which encompasses:
 - Software development
 - Image processing
 - Algorithm development
 - Data Mining / Artificial Intelligence



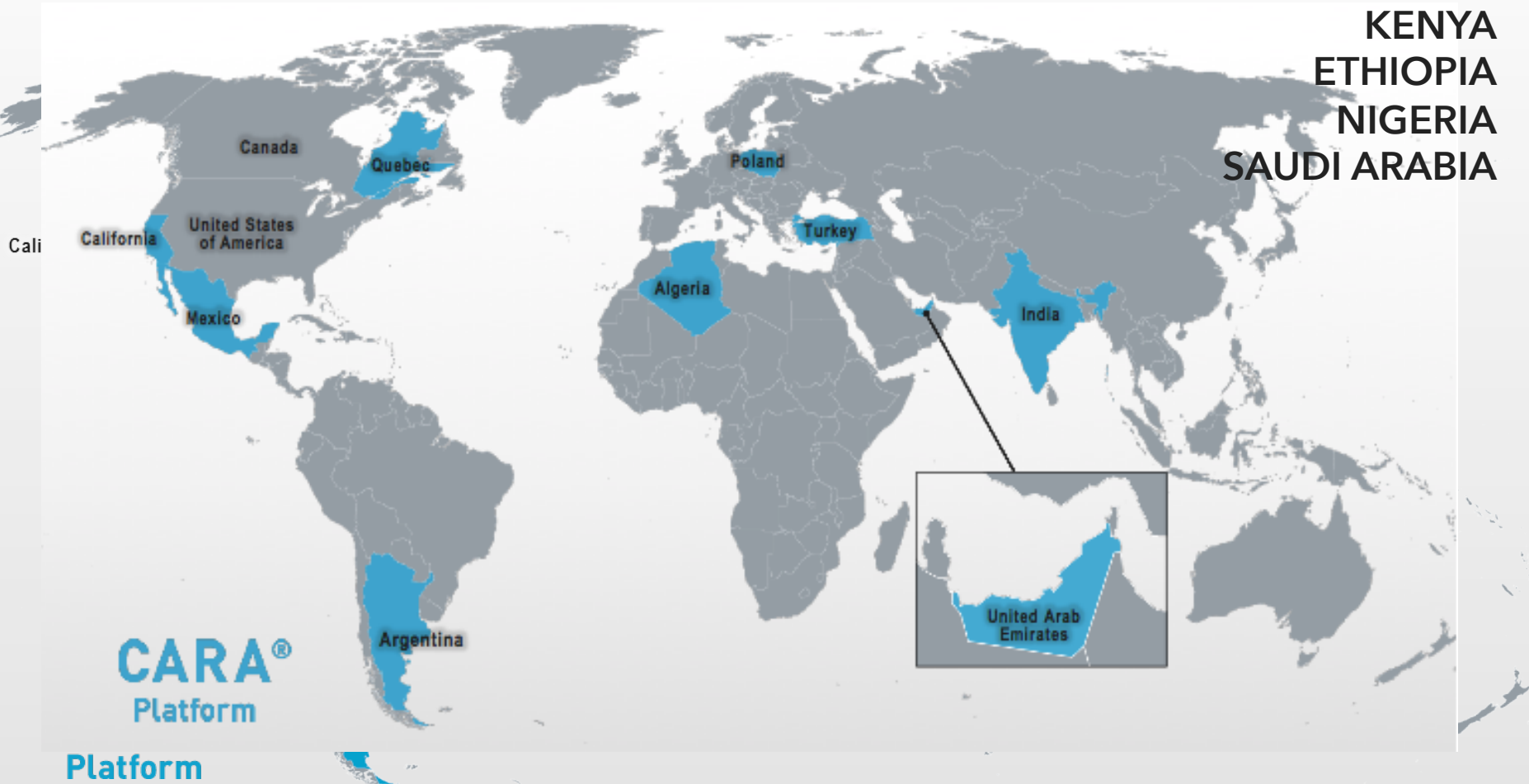
Regulatory Compliance

ISO 9001:2008	Certified
ISO 13485:2003	Certified
CMDCAS (1)	Certified
Health Canada	Approved - Class 2 Medical Device
FDA	Approved - Class 2 Medical Device 5 10 K
CE Mark	Approved
Others	

(1) Canadian Medical Devices Conformity Assessment System

Multi national program

SINCE 2017 WE ADDED:
MALAYSIA
KENYA
ETHIOPIA
NIGERIA
SAUDI ARABIA



From the Patient's Perspective:



Normal Vision



**Vision with
diabetic retinopathy**

2

Economics

Value Propositions

Patient

- Convenient non-invasive test
- Trip to specialist only if necessary

Diabetologist / GP / Endo

- Higher patient compliance
- Additional pertinent patient information

Retina Specialist

- Increased focus on treatable cases
- Increased revenue

Pharmaceutical Company

- Increased drug sales volume

Insurance Company

- Increased patient compliance
- Decreased health plan expenditure

Government

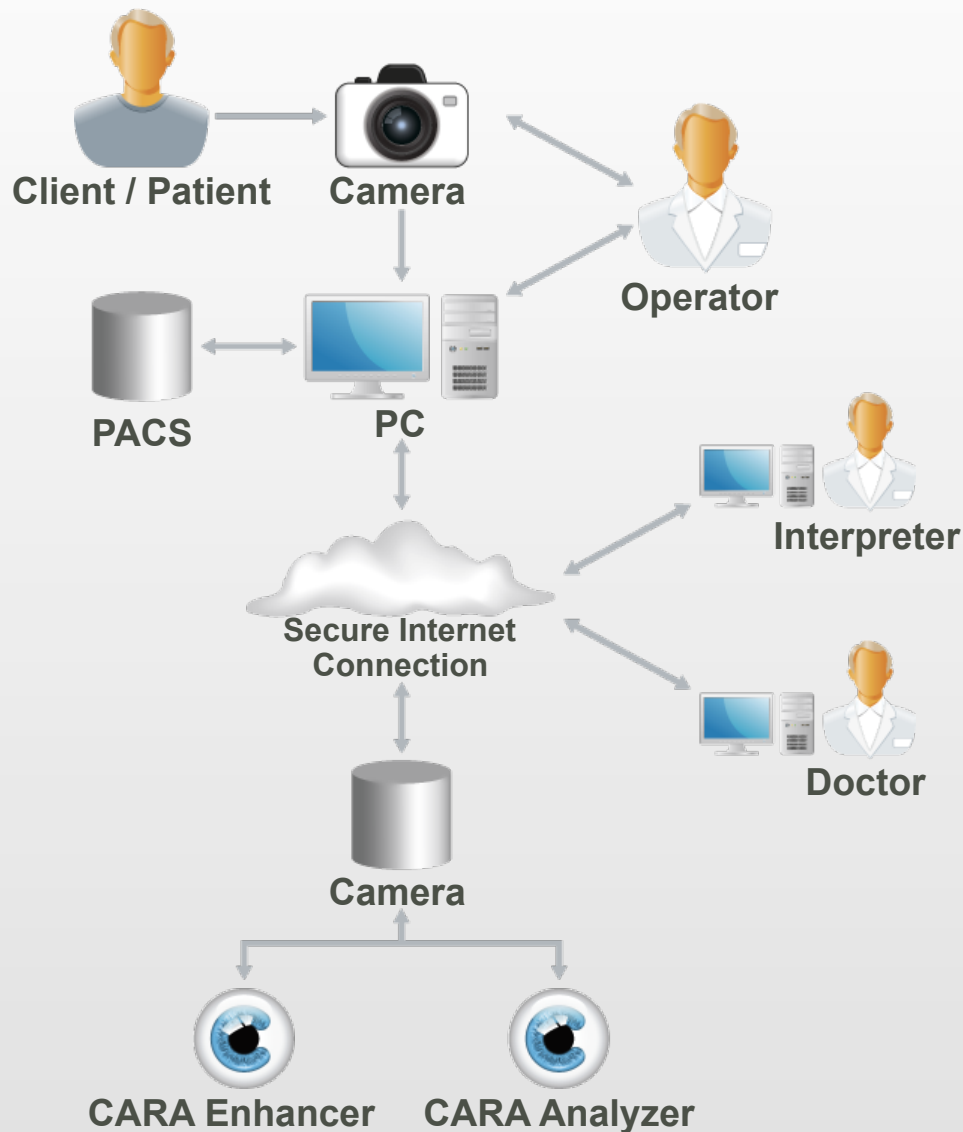
- Significant cost avoidance mid/long term
- Positive political optics



3

Screening Approach

Telemedicine / Referral Pathway



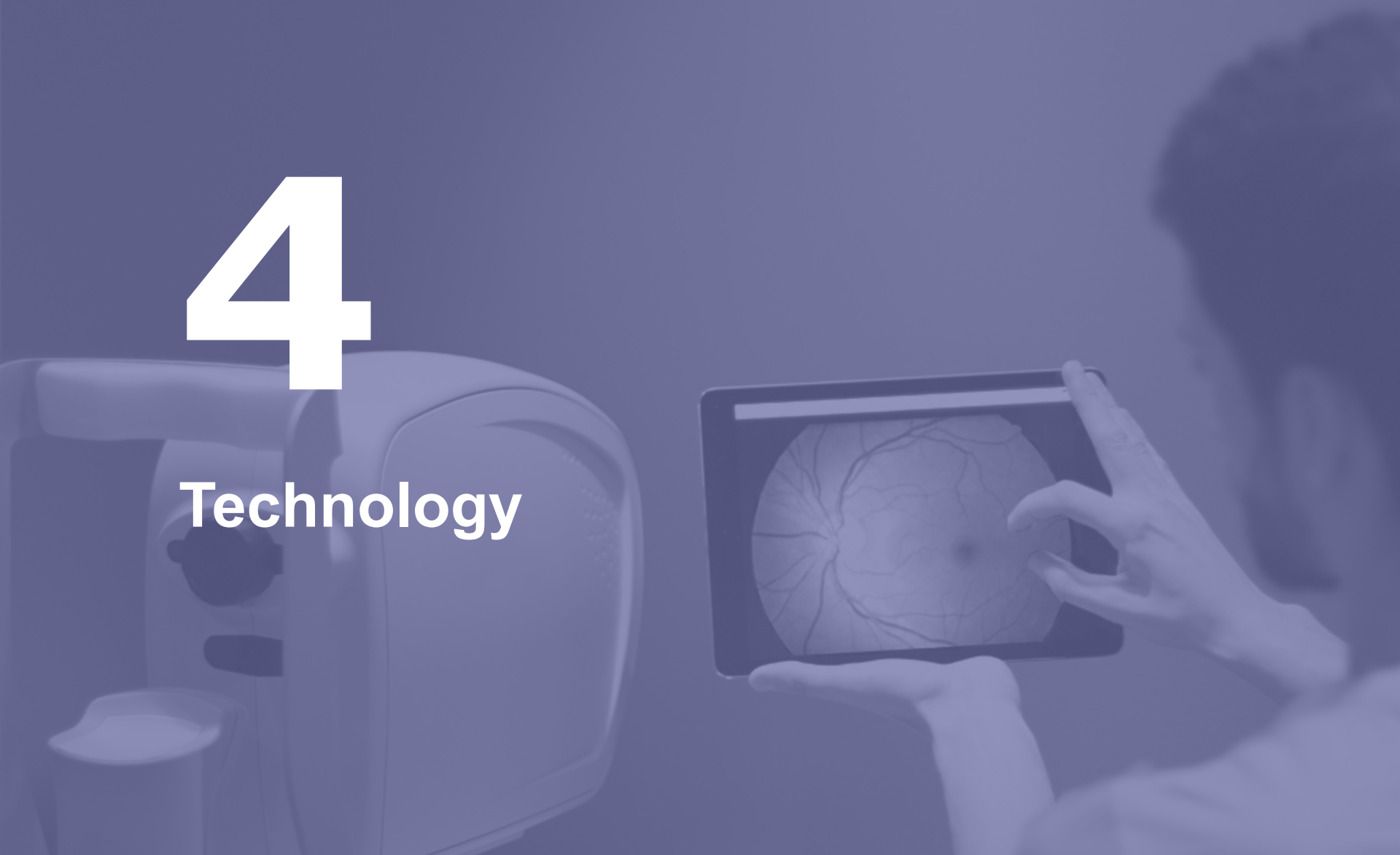
CARA:

(Computer Assisted Retinal Analysis)

- Tele-ophthalmology platform
- Integrates with almost any camera
- Comprises image upload, automated pre-screening, grading and referral interface
- Modules extend functionality:
 - Enhancement
 - Automated pre-Analysis (DR)
 - Automated pre-Analysis (other)

4

Technology

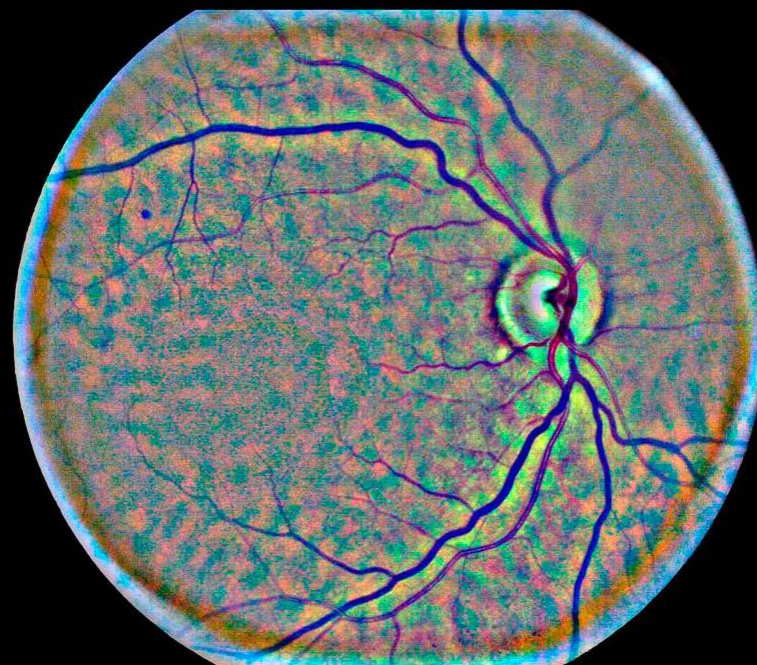


2. Mild Diabetic Retinopathy

Mild Diabetic Retinopathy



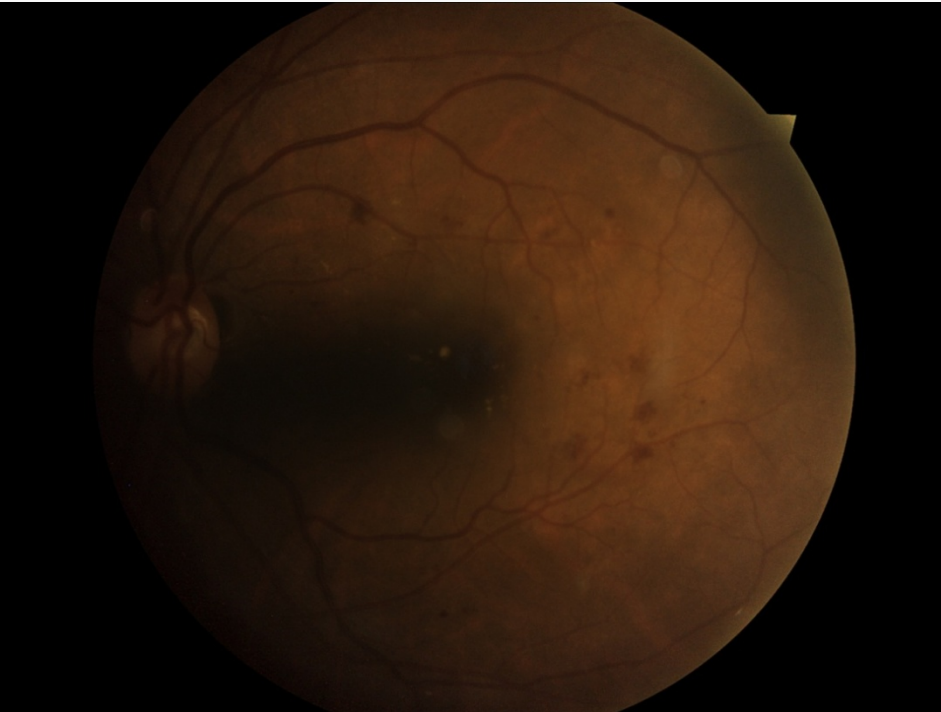
DIAGNOS Enhanced



- The retina shows early signs of disease (usually affects both eyes)
- Retinopathy may indicate that damage has started to occur in other organs
- During early stages doctors may adjust medication and recommend lifestyle changes

3. Severe Diabetic Retinopathy

Severe Diabetic Retinopathy



DIAGNOS Enhanced

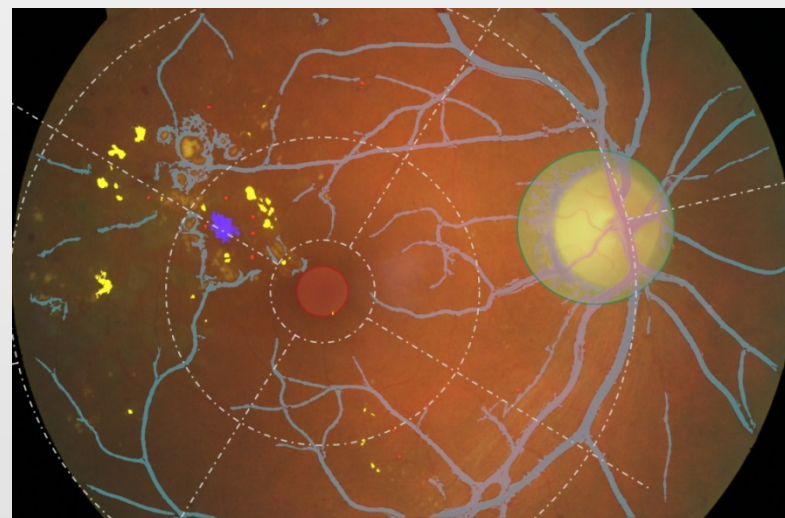
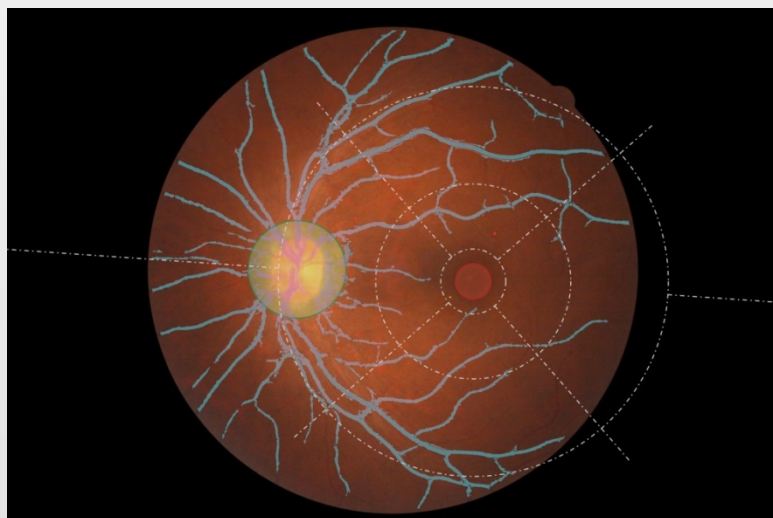


- Severe Diabetic Retinopathy may lead to blindness and may or may not have symptoms
- It is very important to see a retina specialist as soon as possible to discuss treatment options
- The earlier the treatment is started, the better the outcome

Our algorithms are capable of

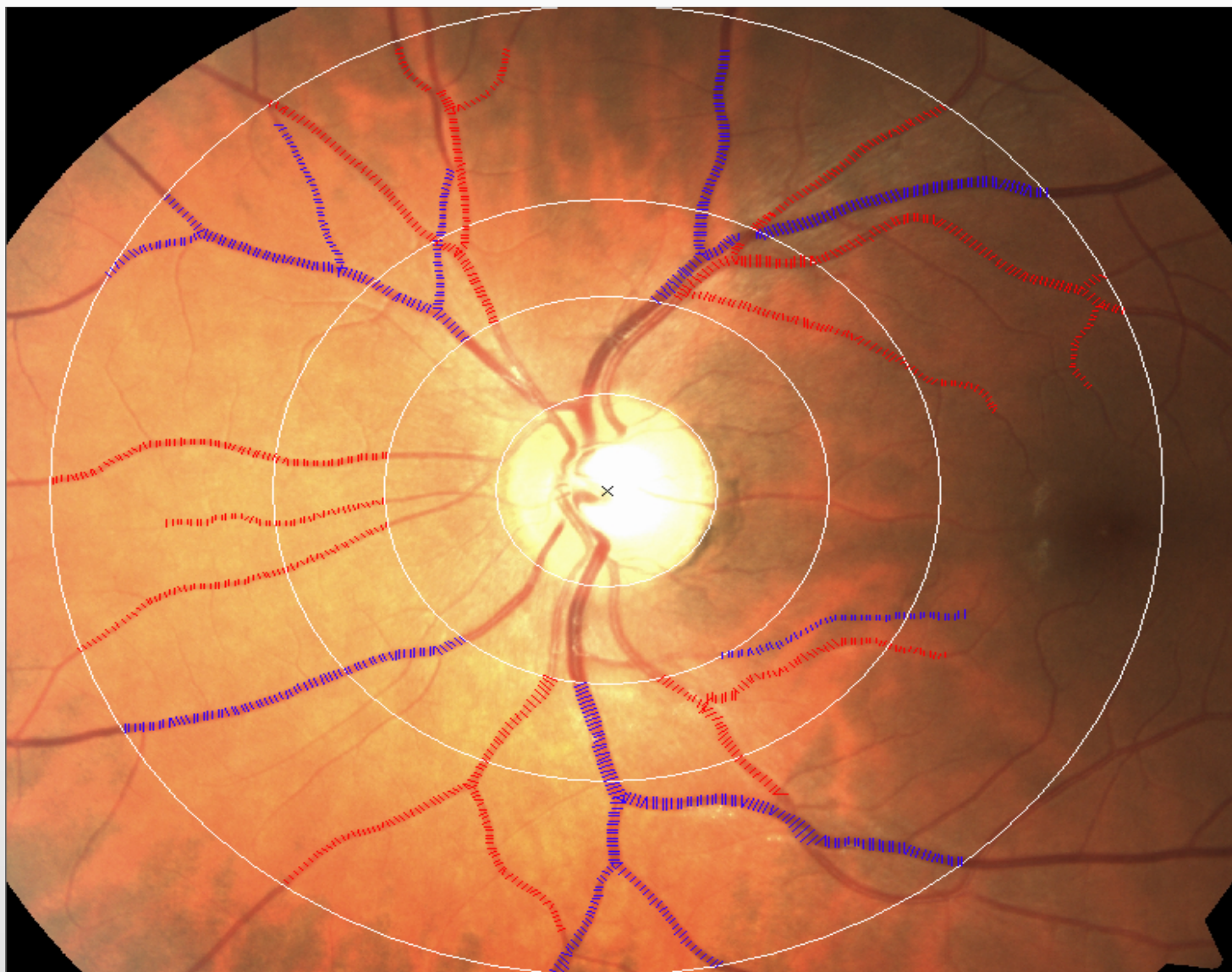
- Automatic detection of pathology in retinal photographs
- Lesion classification
- Pre-triaging patients in order of severity

Automated triage can help reduce healthcare labour requirements while increasing patient access to quality care and reducing healthcare expenditure



CARA future – CARDIO

DIAGNOS



5

Deployment



BEAT IT IN A BLINK!

By CARA

Beat it in a Blink! A program for the prevention of Diabetic Retinopathy

Powered by CARA

Deployment Options

We are flexible with regards to our screening model and location

Mobile (\$\$\$\$)



Managed (\$\$\$)



Standalone (\$\$)



Software only (\$)



** Diagnos is willing to invest in infrastructure
(local offices, local employees, cameras, vans, etc.)
when there is ample interest within a given location*

Screening Example (Mobile)

DIAGNOS



(Van + Technician + Equipment + Software)



Capital structure and major shareholders

Total Outstanding Shares	162.4 Million
Fully diluted	217.2 Million

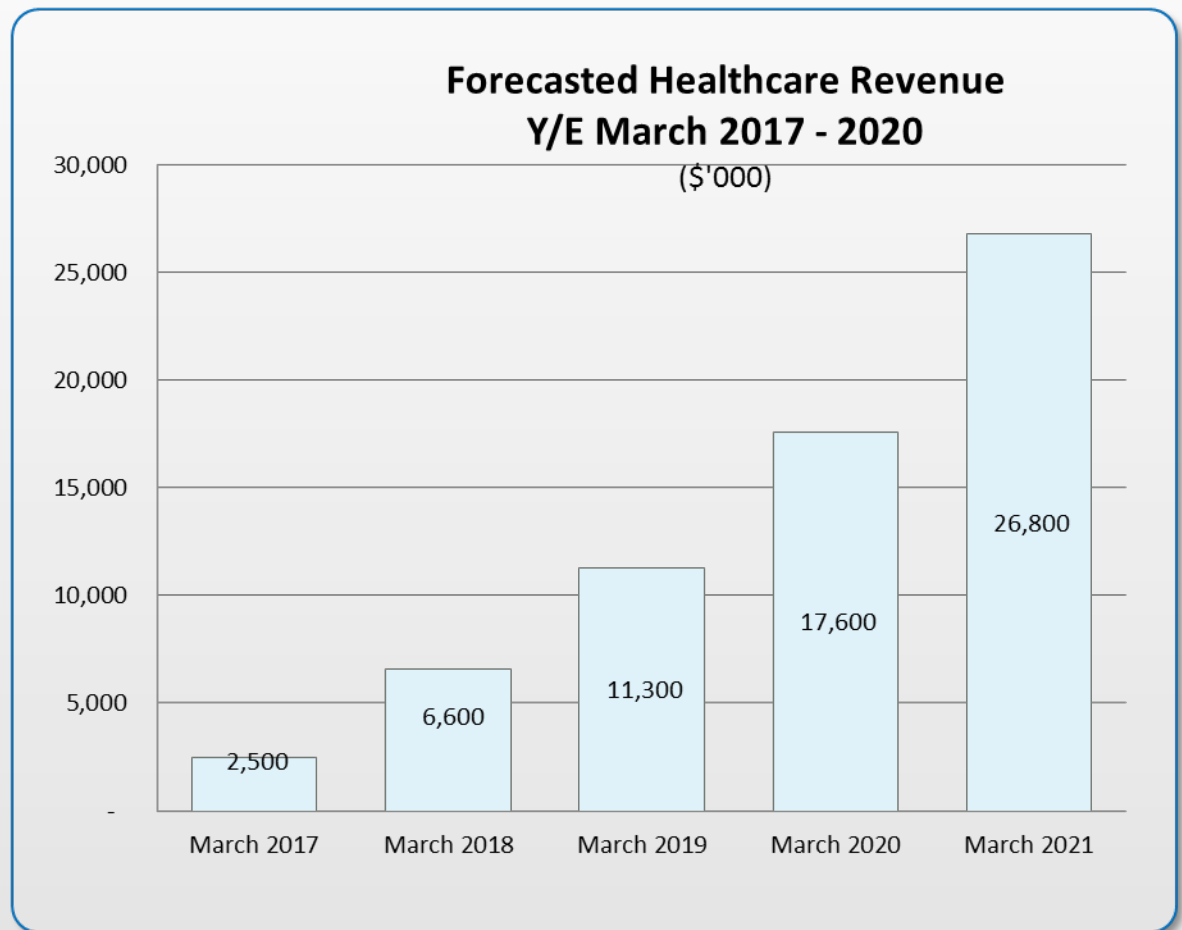
(2) Stock Options: 5,959,684 Av. \$0.29

(3) Dundee: 18%

(4) Renaud Family: 8%

(5) Coffin Family: 8%

Consolidated Revenue Potential



Consolidated P&L Potential

	March 31,				
	2017	2018	2019	2020	2021
	(in millions CAD)				
Total Revenue	2.5	6.6	11.3	17.6	26.8
<i>Growth YoY</i>		164%	71%	56%	52%
Gross Profit	(1.7)	1.2	3.7	6.9	11.7
<i>Growth YoY</i>			197%	89%	70%
Operating expenses	4.2	5.7	8.0	11.2	15.7
<i>Growth YoY</i>		34%	42%	40%	40%
<i>As a % of revenue</i>		86%	71%	64%	59%
EBITDA	(1.7)	0.9	3.3	6.4	11.1
<i>Growth YoY</i>			251%	96%	73%
<i>EBITDA margin</i>		14%	29%	36%	41%
Profit before Tax (PBT)	(2.2)	0.4	2.8	6.1	11.1
<i>PBT margin</i>		7%	24%	35%	41%
Profit after Tax (PAT)	(2.2)	0.4	2.8	6.1	9.4
<i>PAT margin</i>		7%	24%	35%	35%
Reported EPS -Diluted	(0.01)	0.00	0.01	0.03	0.05

Diagnos Offices

Montréal (Head Office)

DIAGNOS



Mumbai



Dubai



Mexico



Algeria



DIAGNOS

For More Information:

TORONTO VENTURE EXCHANGE
Symbol: ADK.V

CONTACT:

Andre Larente, President

alarente@diagnos.com

Phone: 450 678-8882, ext 224

CORPORATE OFFICE:

DIAGNOS Inc.

Suite 340, 7005 Taschereau Blvd.

Brossard, Quebec, J4Z 1A7, Canada

Tel.: 450 678-8882

Fax: 450 678-8119

www.diagnos.com